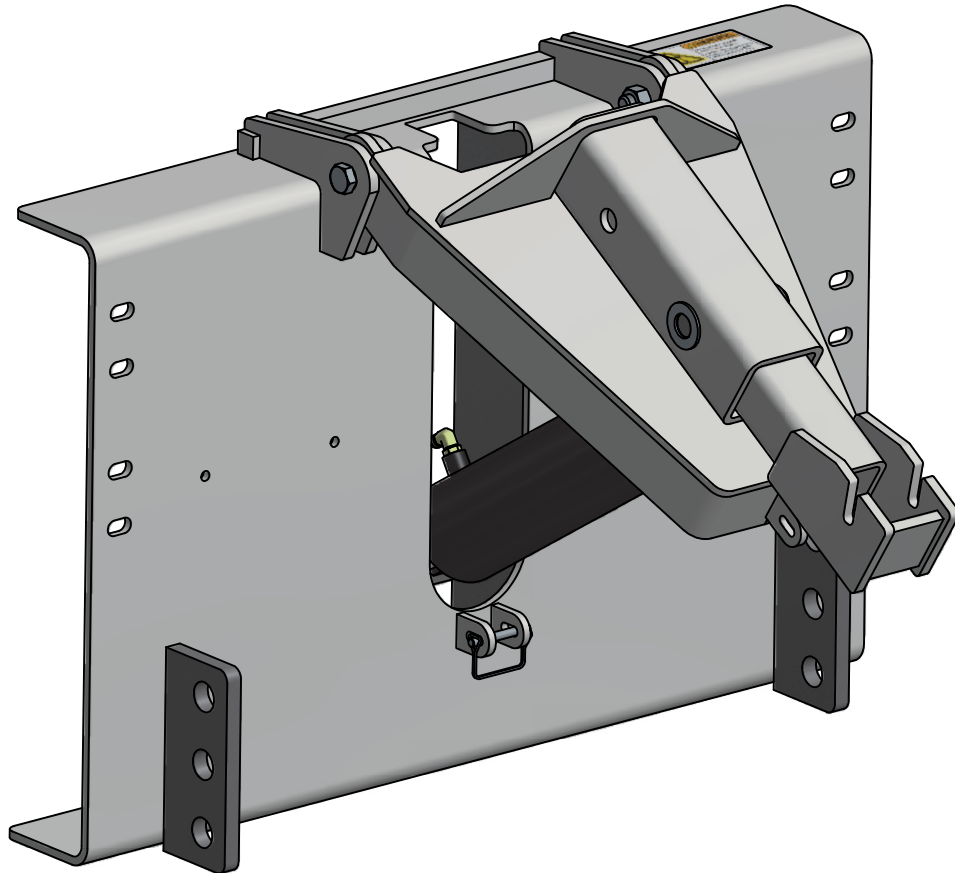


500LM LOW MOUNT FRONT HARNESS

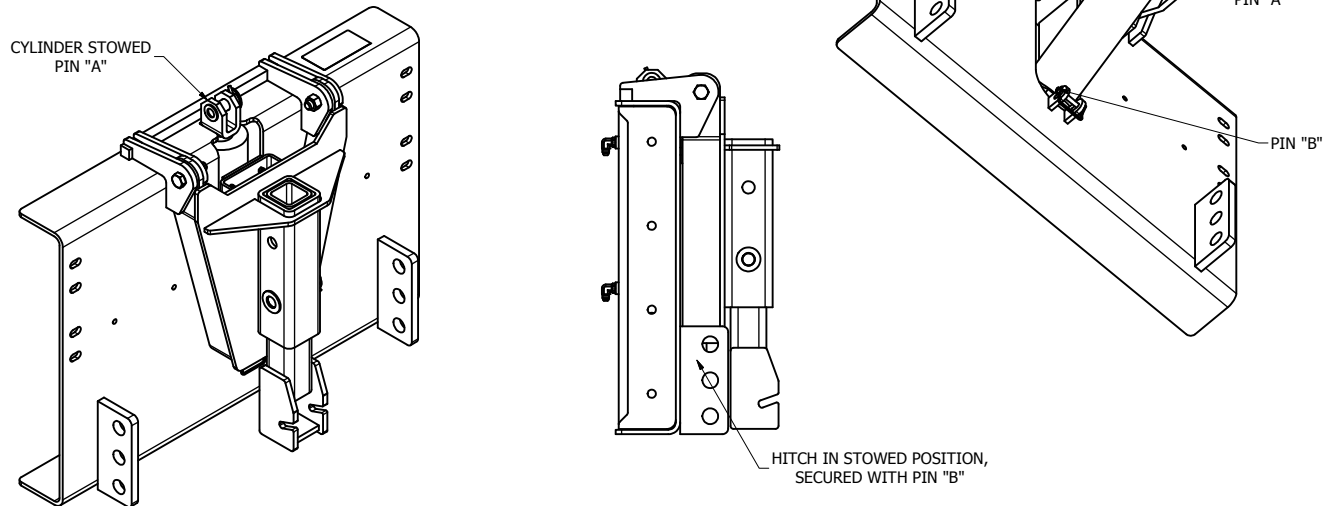


VCL LOW MOUNT HITCH (STORAGE PROCEDURES AND POSITIONS)

1) STANDARD LIFT TONGUE STOWAGE PROCEDURE:

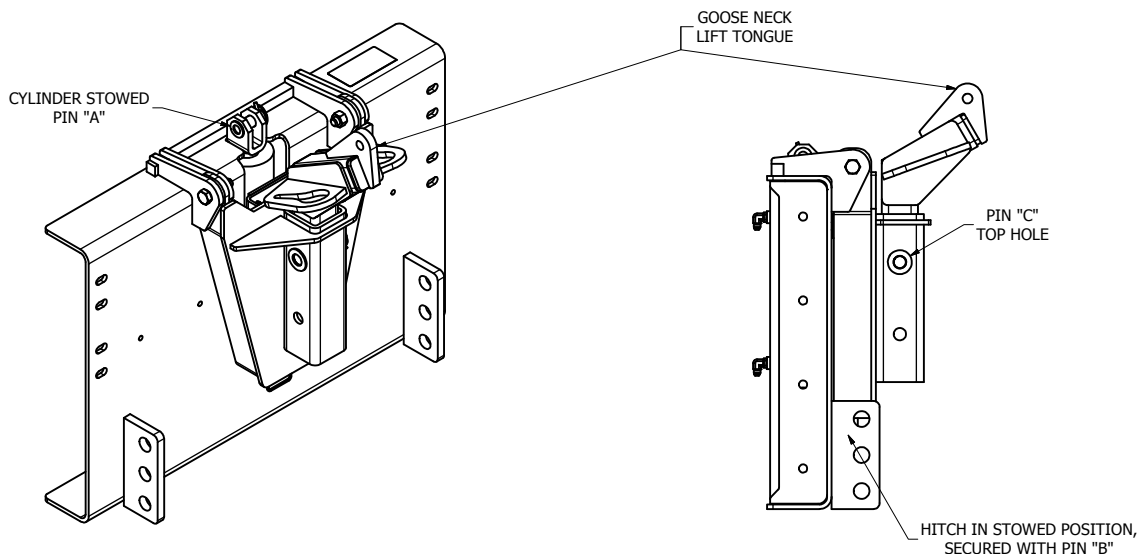
- a) WITH PLOW DETACHED LOWER THE LIFTING TONGUE USING THE HYDRAULIC CYLINDER
- b) TURN OFF VEHICLE
- c) REMOVE PIN "A" CONNECTING THE HYDRAULIC CYLINDER AND THE LIFT YOKE (THE LIFT YOKE AND CYLINDER WILL NEED TO BE SUPPORTED SO THAT NEITHER FALL)
- d) LIFT THE HYDRAULIC CYLINDER TO STOWED POSITION (AS SHOWN), AND REPLACE PIN "A" IN THE HYDRAULIC CYLINDER
- e) LOWER LIFT YOKE AND SECURE WITH PIN "B" (AS SHOWN)

NOTE: *THIS IS THE ONLY LIFT TONGUE THAT CAN REMAIN IN THE WORKING POSITION FOR STOWAGE*



2) GOOSE NECK LIFT TONGUE STOWAGE PROCEDURE:

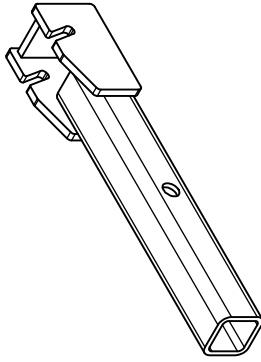
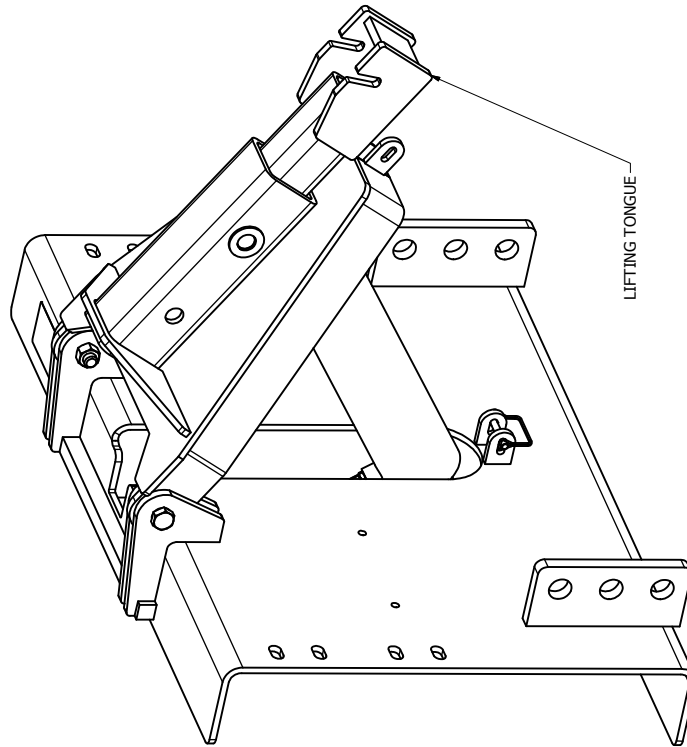
- a) WITH PLOW DETACHED LOWER THE LIFTING TONGUE USING THE HYDRAULIC CYLINDER
- b) TURN OFF VEHICLE
- c) REMOVE GOOSE NECK LIFT TONGUE AND PLACE ON GROUND
- d) REMOVE PIN "A" CONNECTING THE HYDRAULIC CYLINDER AND THE LIFT YOKE (THE LIFT YOKE AND CYLINDER WILL NEED TO BE SUPPORTED SO THAT NEITHER FALL)
- e) LIFT THE HYDRAULIC CYLINDER TO STOWED POSITION (AS SHOWN), AND REPLACE PIN "A" IN THE HYDRAULIC CYLINDER
- f) LOWER LIFT YOKE AND SECURE WITH PIN "B" (AS SHOWN)
- g) REPLACE GOOSE NECK LIFT TONGUE (AS SHOWN) AND SECURE WITH PIN "C"



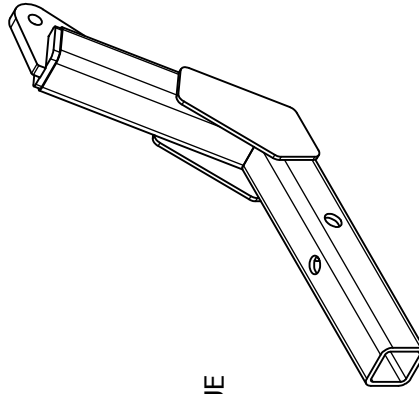


BOX 1120, NORPARK DRIVE, MOUNT FOREST, ONT. N0G 2L0 (519)323-4433 PH (519)323-4608 FX

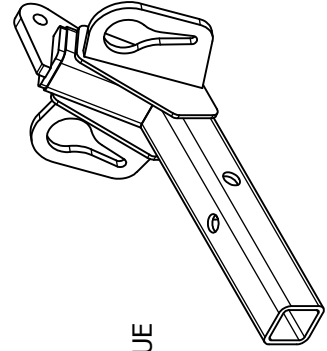
LOW MOUNT LIFTING TONGUE OPTIONS



00101576
STANDARD LOW MOUNT LIFT TONGUE



00101607
LOW MOUNT GOOSE NECK LIFT TONGUE



00101608
LOW MOUNT GOOSE NECK LIFT TONGUE
WITH GRAB LINKS

EQUIPMENT MAY NOT BE EXACTLY AS SHOWN. SOME COMPONENTS MAY BE OPTIONAL.
TO MAINTAIN OUR ON-GOING PRODUCT AND DEVELOPMENT IMPROVEMENT PROGRAM, VIKING CIVES LTD. RESERVES THE RIGHT TO CHANGE EQUIPMENT & SPECIFICATION WITHOUT NOTICE.



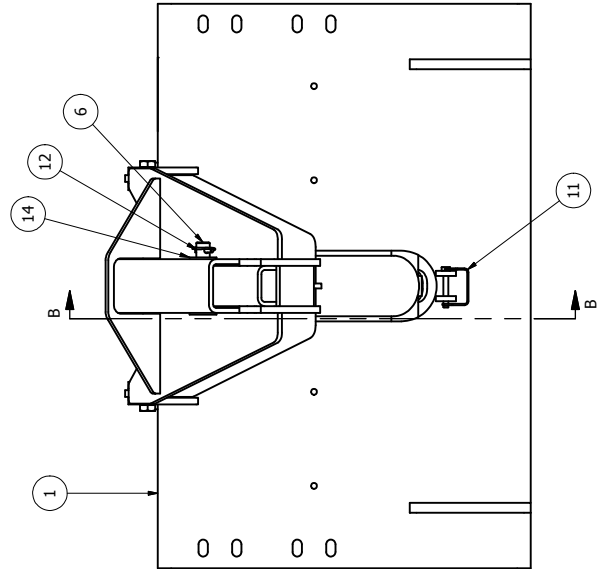
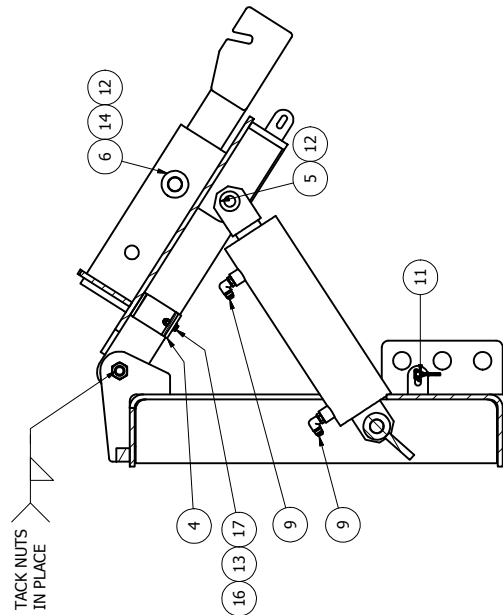
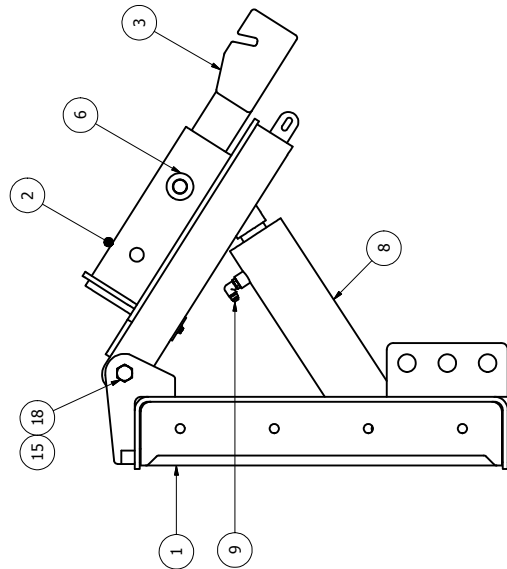
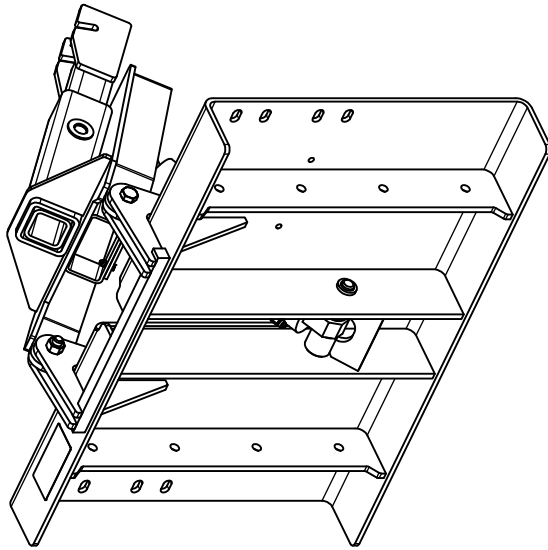
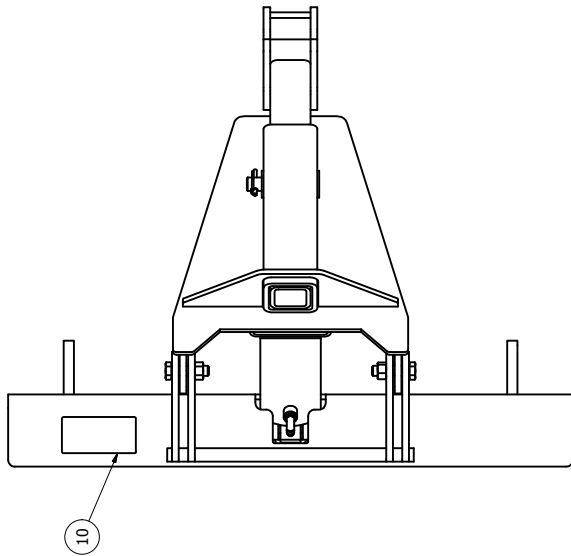
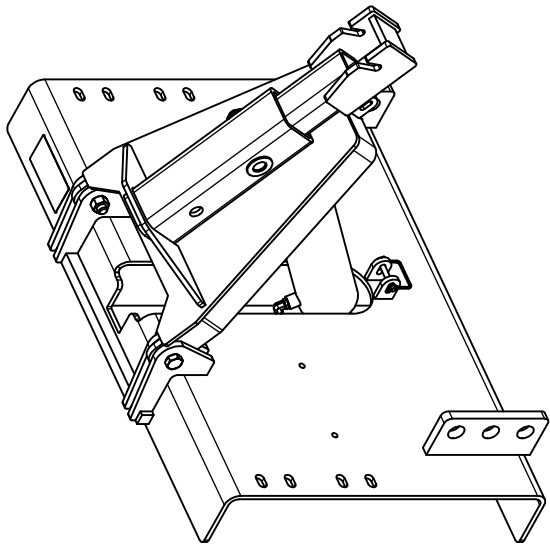
00101449

500LM LOW MOUNT FRONT HARNESS

ITEM ID	ITEM NO.	DESCRIPTION	QTY REQ
1	00101448	LOW MOUNT FRONT HITCH WELD'T	1
2	00101572	LOW MOUNT LIFT YOKE WELD'T	1
3	00101576	GRAB LINK EXTENSION WELDMENT	1
4	00101577	RUBBER MATTING STOP 1/4	1
5	00900003	PIN 1.000 DIA X 2.563 WELD'T	1
6	00900113	PIN 1.000 DIA X 4.625 WELD'T	1
7	00900169	PIN 1.000 DIA X 7.000 WELD'T	1
8	0540040	CYLINDER HYD DA 4 X 10 FRONT LIFT	1
9	0630016	HYD ADAPTER 3/8 SAE 90 3/8 JIC	2
10	0820113	DECAL CAUTION EXTENDING CYLINDER	1
11	HW13QS-1240	LOCK PIN 3/8 X 2 1/2 SQUARE	1
12	HW13T-0828	LYNCH PIN 1/4 X 1 3/4 ZINC	3
13	HW14A-04	FLATWASHER SAE 1/4 ZINC	2
14	HW14A-16	FLATWASHER SAE 1 ZINC	1
15	HW30A-12	NUT HEX 3/4 UNC ZINC	2
16	HW36D-04	NUT HEX ELASTIC 1/4 UNC ZINC	2
17	HW40A-0408	BOLT HEX 1/4 X 1 UNC ZINC	2
18	HW40A-1222	BOLT HEX 3/4 X 2 3/4 UNC ZINC	2



BOX 1120, NORPARK DRIVE, MOUNT FOREST, ONT. N0G 2L0 (519)323-4433 PH (519)323-4608 FX



SECTION B-B

EQUIPMENT MAY NOT BE EXACTLY AS SHOWN. SOME COMPONENTS MAY BE OPTIONAL.
TO MAINTAIN OUR ON-GOING PRODUCT AND DEVELOPMENT IMPROVEMENT PROGRAM, VIKING-GIVES LTD. RESERVES THE RIGHT TO CHANGE EQUIPMENT & SPECIFICATION WITHOUT NOTICE.



THIS PAGE LEFT BLANK